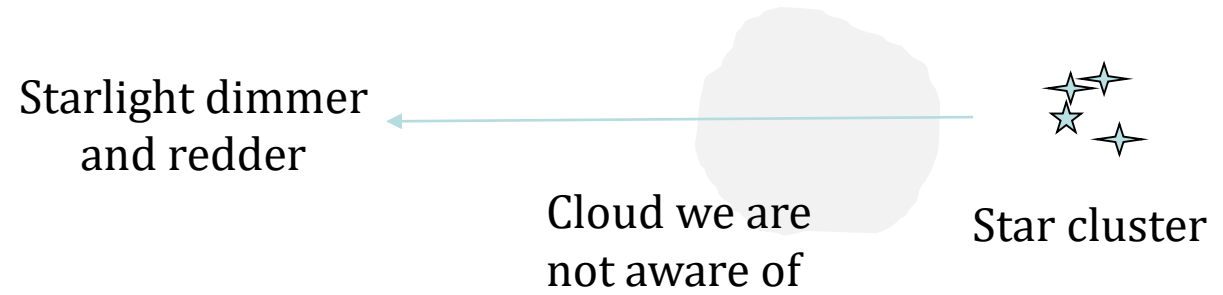


Interstellar Extinction

$$\langle \text{Extinction} \rangle = \langle \text{Absorption} \rangle + \langle \text{Scattering} \rangle$$



Evidence of extinction

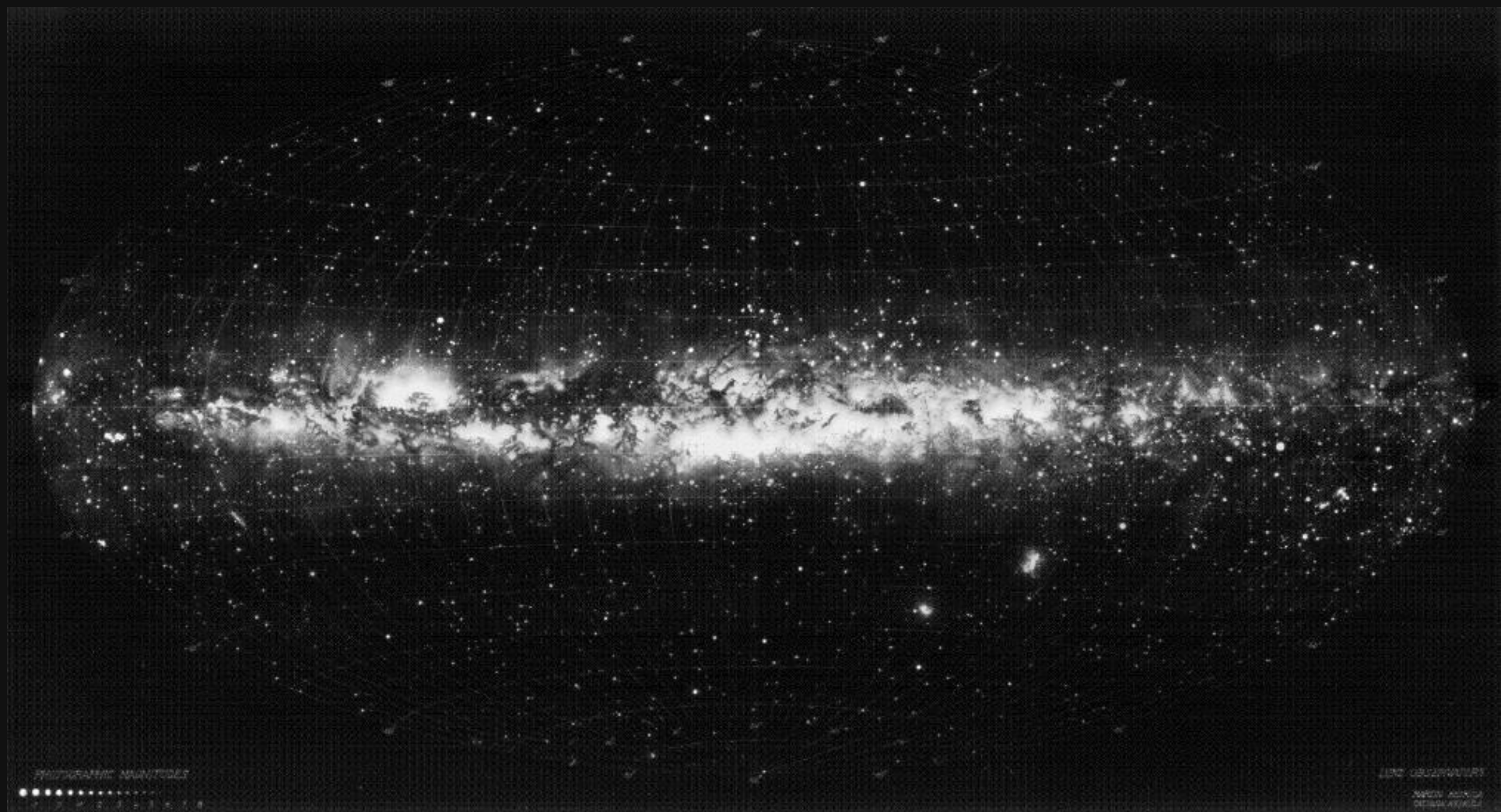
(a) Dark clouds seen in photographs

(b) Statistically star clusters \rightarrow brightness \Leftrightarrow size

e.g., dimmer \rightarrow smaller, but Trumpler in 1930s

found clusters further \rightarrow fainter than expected

(c) Star count



ABSORPTION OF LIGHT IN THE GALACTIC SYSTEM

BY ROBERT J. TRUMPLER

1930, PASP, 42, 214

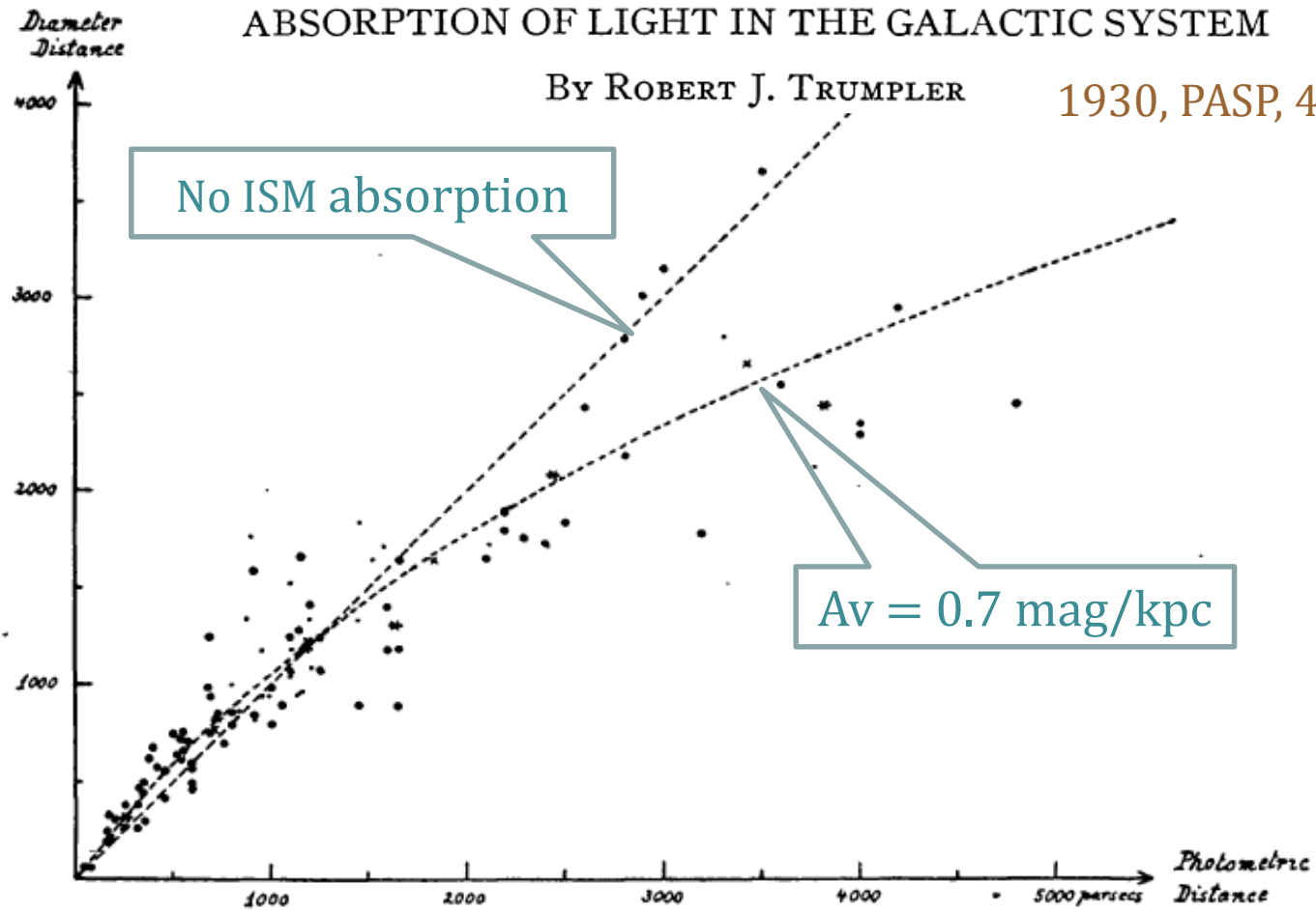
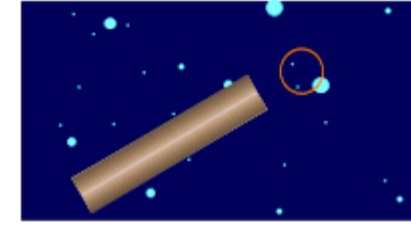


FIG. 1.—Comparison of the distances of 100 open star clusters determined from apparent magnitudes and spectral types (abscissae) with those determined from angular diameters (ordinates). The large dots refer to clusters with well-determined photometric distances, the small dots to clusters with less certain data (half weight). The asterisks and crosses represent group means. If no general space absorption were present, the clusters should fall along the dotted straight line; the dotted curve gives the relation between the two distance measures for a general absorption of $0^m.7$ per 1000 parsecs.

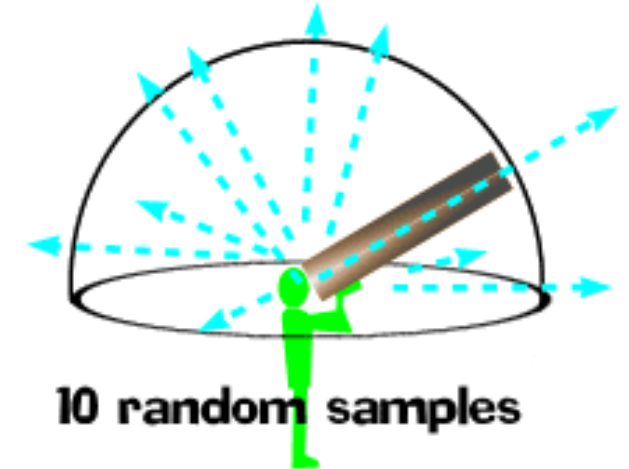
Star Count



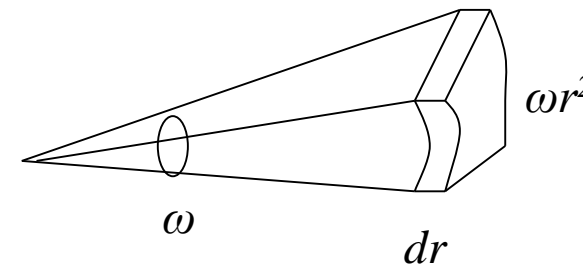
Prediction of a uniform galaxy

Assumptions:

- (i) stars uniformly distributed: D stars pc^{-3}
- (ii) our galaxy infinite in extent
- (iii) no extinction



In reality, none of the above is true!



Total number of stars out to r

$$N(r) = \omega D \int_0^{\infty} r'^2 dr' = \frac{1}{3} \omega D r^3$$

If all stars have absolute magnitude M (i.e., same intrinsic brightness --- another untrue assumption), since

$$m - M = 5 \log r_{\text{pc}} - 5$$

$$r_{\text{pc}} = 10^{0.2(m-M)+1}$$

So $N(r) = 10^{0.6 m - C}$, where $C = C(D, \omega, M) \rightarrow N(m) \propto 10^{0.6 m}$

$\because 10^{0.6} \approx 4$, so the number of stars increases 4 times as we go 1 mag fainter.

This is logically unlikely, because if we integrate over m , the sky would have been blazingly bright (**Olbers' paradox**).

Olbers' Paradox --- Why is the night sky dark?

The paradox can be argued away in the case of the Galaxy by its finite size, but the same paradox exists also for the Universe → expansion of the Universe

The star count result was recognized by Kapteyn

→ Kapteyn Universe: star density falls as the distance increases

Extinction effect: If w/o absorption we observe m mag, then with $a(r)$ mag absorption at r , we would observe $m + a(r)$

Without extinction: $\log r = 0.2(m - M) + 1$

So the apparent distance r' ($> r$)

$$\log r' = 0.2 [m + a(r) - M] + 1 = 0.2 (m - M) + 1 + 0.2 a(r)$$

$$= \log r + 0.2 a(r)$$

$$\rightarrow r' = 10^{0.2 a(r)} r$$

So dimming of 1.5 mag

→ overestimate of distance by $2 \times$

→ underestimate space stellar density by $8 \times$

Both the star density falling off and extinction should be taken into account → Galactic structure

Galactic poles: minimal extinction

Galactic disk: extinction significant ~ **1 mag kpc⁻¹**

In general, $m_\lambda - M_\lambda = 5 \log r_{pc} - 5 + A_\lambda$

Because $A_\lambda = -2.5 \log \frac{F_\lambda}{F_{\lambda,0}}$ $F_{\lambda,0}$: flux that would have been observed w/o extinction

and $F_\lambda = F_{\lambda,0} e^{-\tau_\lambda}$

→ $A_\lambda = -2.5 \log(e^{-\tau_\lambda}) \equiv 1.086 \tau_\lambda \equiv 1.086 N_d \sigma_\lambda Q_{ext}$

N_d : # of dust grains cm^{-2} (column density; projection along los)

σ_λ : geometric cross section ($= \pi a^2$)

Q_{ext} : [dimensionless] '**extinction efficiency factor**', $Q_{ext} = Q_{ext}(\lambda)$
= [optical cross section] / [geometric cross section]

Note: $A_\lambda \leftrightarrow \lambda$; extinction at different wavelengths → **reddening**

Why dust? (what causes 1 mag kpc⁻¹?)

Possibilities:

(1) Scattering by free electrons --- Thomson scattering?

$$\sigma_T = \frac{8\pi}{3} \left(\frac{e^2}{m_e c^2} \right)^2 \approx 6.6 \times 10^{-25} \text{ [cm]} \text{ for } \nu < 10^{20} \text{ Hz}$$

Since $A_\nu = 1.086 \bar{n} \sigma \ell$

$$1 = 1.086 \bar{n} 6.6 \times 10^{-25} \cdot \frac{3 \times 10^{21} \text{ cm}}{1 \text{ kpc}}$$

$$\rightarrow \bar{n} \approx 500 \text{ cm}^{-3}$$

1kpc

(2) Scattering by bound charges --- Rayleigh scattering?

$$\sigma_R \sim \sigma_T \left(\frac{\nu}{\nu_0} \right)^4 \text{ cm}^2 \quad (\nu \ll \nu_0)$$

$$\sim \sigma_T \frac{\nu^4}{(\nu^2 - \nu_0^2)^2} \text{ cm}^2 \quad (\nu < \nu_0)$$

Both $\sigma_R < \sigma_T$

$$\bar{n} \approx 10 - 100 \times \sim 10^4$$

(3) Absorption by solid particles?

For particle radius \sim wavelength, $Q_e \sim 1$

$$A_v = 1.086 \bar{n} \sigma \ell$$

Size of grains

$$1 \approx \bar{n} \pi (5 \times 10^{-5})^2 \cdot 3 \times 10^{21}$$

$$\rightarrow \bar{n} \approx 4 \times 10^{-14} \text{ cm}^{-3}$$

Volume mass density

$$\rho(\text{material}) \sim 2 \text{ g cm}^{-3}$$

$$\frac{4}{3} \pi a^3 \bar{n} \rho \sim 4 \times 10^{-26} (\text{g cm}^{-3}) \longrightarrow 1\% \text{ of Oort limit}$$

Note: wavelength dependence

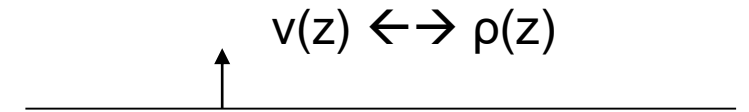
Extinction $Q \sim \lambda^{-1}$

Thomson $\sim \lambda^0$

Rayleigh $\sim \lambda^{-4}$

Oort Limit

--- mass in the plane by star counting along the height



$\rho(z)$: (total) mass density; $v(z)$: velocity dispersion of stars

Poisson eq. $\Delta\phi = -\frac{dg_z(z)}{dz} = 4\pi G\rho(z)$

observed derived

$\rho_{\text{ISM}} \lesssim 6 \times 10^{-24} \text{ (g cm}^{-3}\text{)}$ \sim about 2-3 H atoms cm^{-3} ,
assuming He/H \sim 10% by number

So, a volume mass density of $4 \times 10^{-26} \text{ g cm}^{-3}$ is ok, and if dust is responsible for the extinction, this implies a

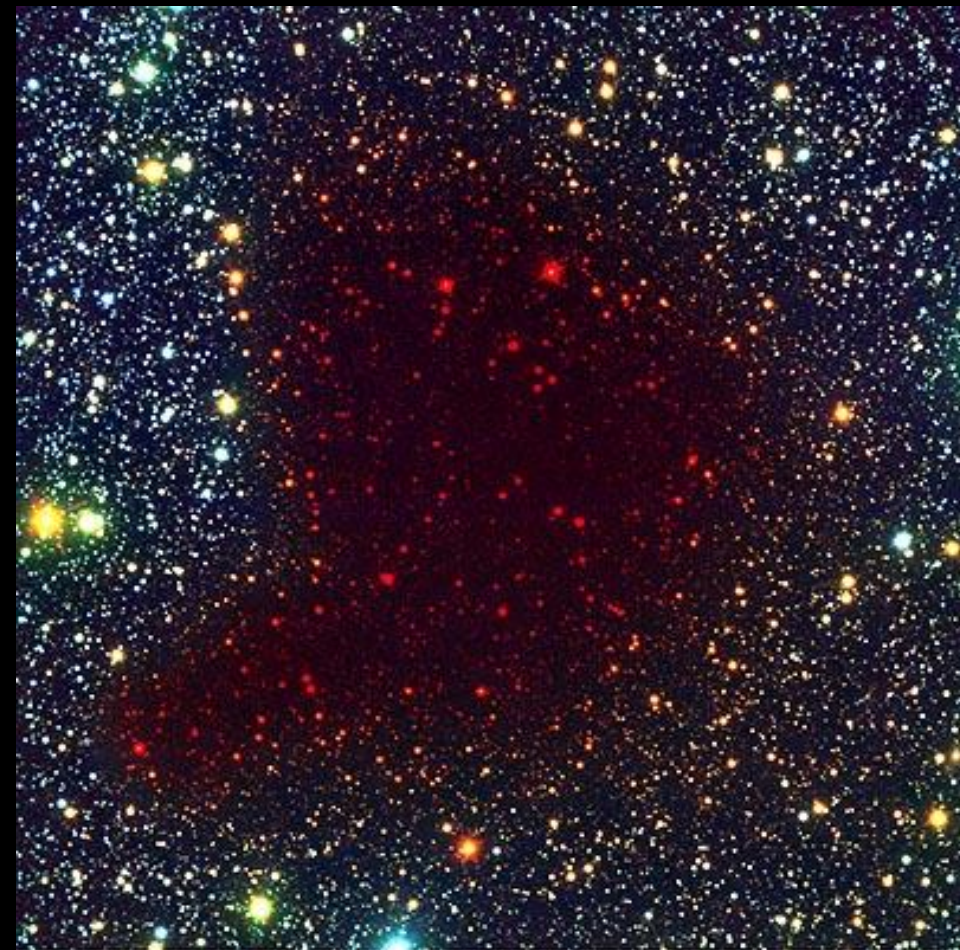
gas-to-dust ratio of ~ 100



Pre-Collapse Black Cloud B68 (visual view)
(VLT ANTU + FORS 1)

ESO PR Photo 02a/01 (10 January 2001)

© European Southern Observatory



Seeing Through the Pre-Collapse Black Cloud B68
(VLT ANTU + FORS 1 - NTT + SOFI)

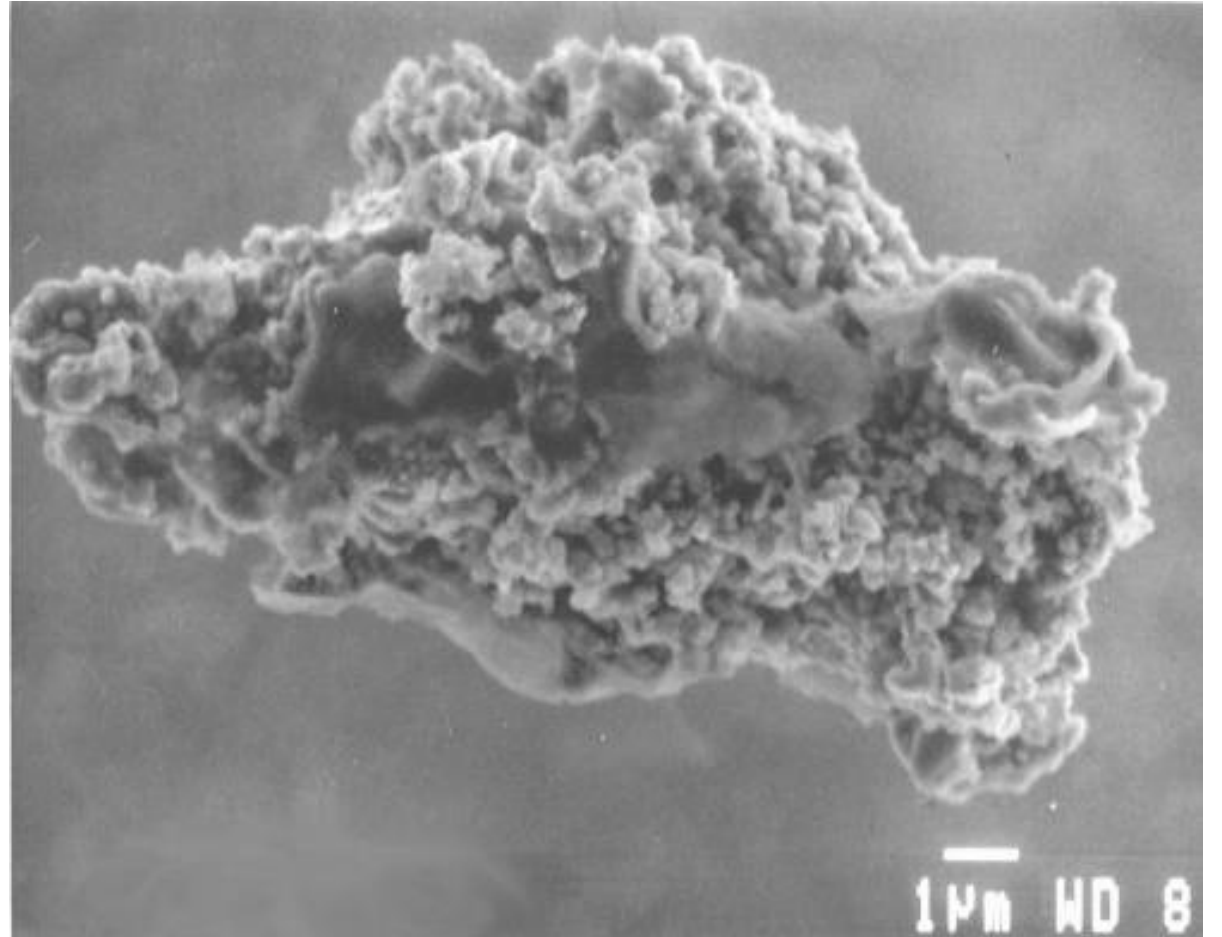
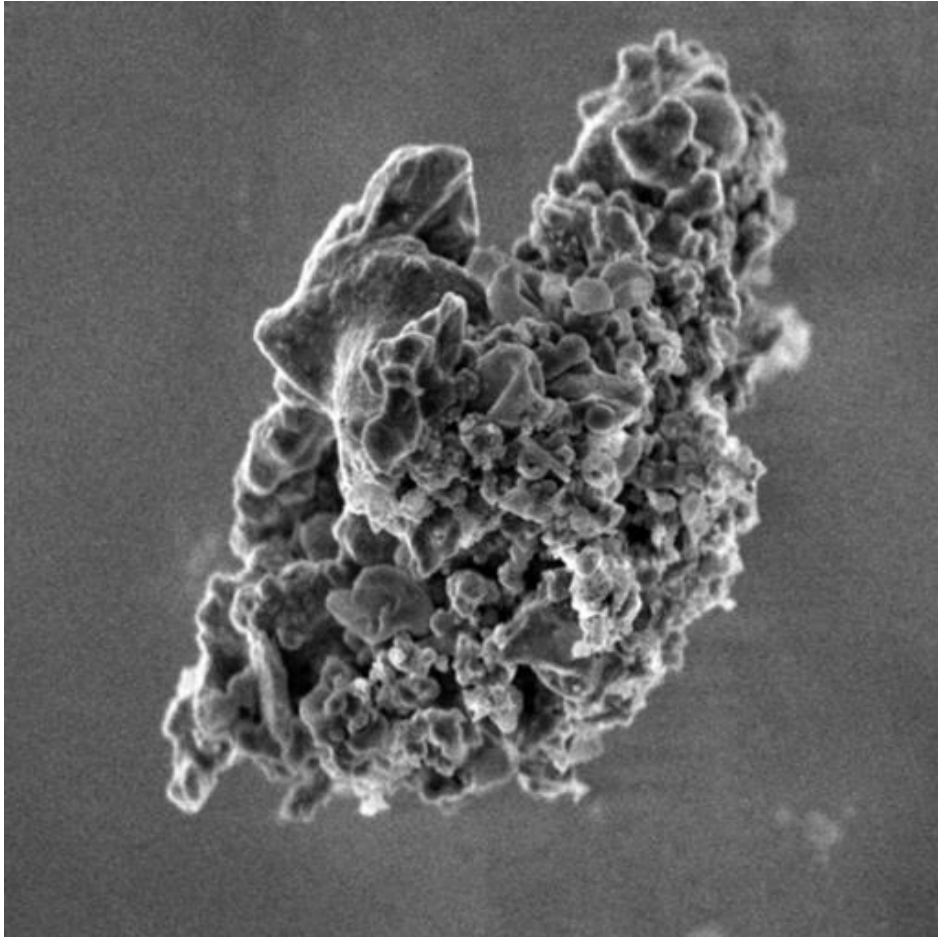
ESO PR Photo 02b/01 (10 January 2001)

© European Southern Observatory





http://spiff.rit.edu/classes/phys230/lectures/ism_dust/ism_dust.html



The grains appear to be loose (porous) conglomerations of smaller specks of material, which stuck together after bumping into each other.

Selective Extinction --- the wavelength dependence of extinction

Choose 2 stars of the same spectral types and luminosity classes. Observe their magnitude difference Δm between λ_1 and λ_2

Δm is caused by (1) different distances, and (2) extinction by intervening dust grains

OB stars are good choices because they can be seen at large distances and their spectra are relatively simple.

Observed at 2 λ s: $\Delta m_{\lambda_1} - \Delta m_{\lambda_2}$

distance dependence canceled out,

$$\Delta m_{\lambda_1} - \Delta m_{\lambda_2} = \Delta (A_{\lambda_1} - A_{\lambda_2})$$

$$E_{\lambda_1-\lambda_2} = (m_{\lambda_1} - m_{\lambda_2}) - (m_{\lambda_1} - m_{\lambda_2})_0 \quad (\text{color difference/excess})$$

$$= (m_{\lambda_1} - m_{\lambda_{1,0}}) - (m_{\lambda_2} - m_{\lambda_{2,0}}) = A_{\lambda_1} - A_{\lambda_2}$$

For example, $\lambda_1 = 4405 \text{ \AA}$ (B band), $\lambda_2 = 5470 \text{ \AA}$ (V band)

$$E_{B-V} \text{ [color excess]} = \text{[measured color]} - \text{[intrinsic color]}$$

Traditionally shorter wavelength minus longer, e.g., $E(B - V)$, $E(I - K)$, $E(U - B)$, $E(K - W1)$

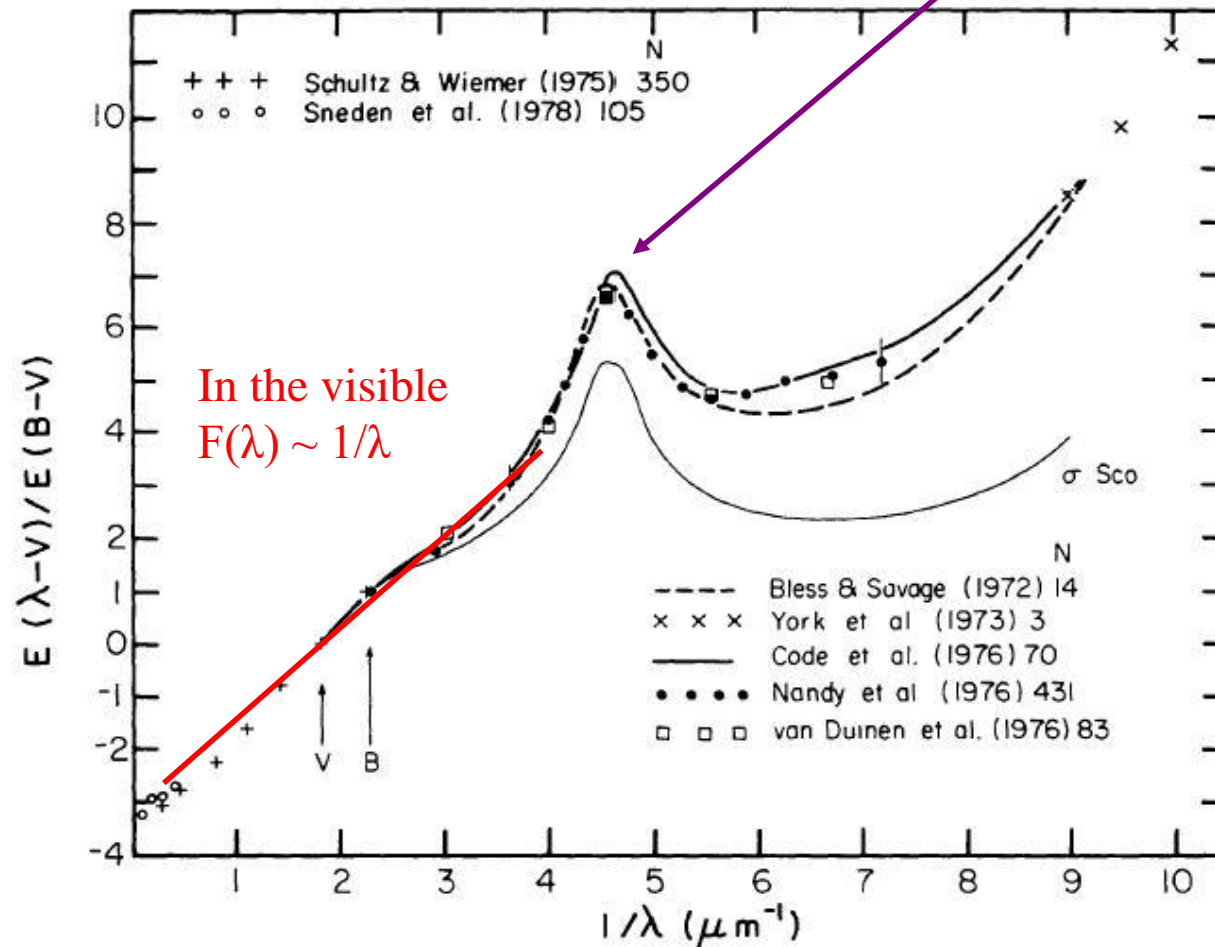
$$E_{B-V} = (B - V) - (B - V)_0 = A_B - A_V$$

The intrinsic colors of stars of different types are known.

The 'normalized' extinction (extinction/reddening law)

$$F(\lambda) = \frac{A_\lambda - A_V}{A_B - A_V} = \frac{E_{\lambda-V}}{E_{B-V}}$$

The UV 'bump' $1/\lambda \sim 4.6$
 $\rightarrow \lambda \sim 2175 \text{ \AA}$



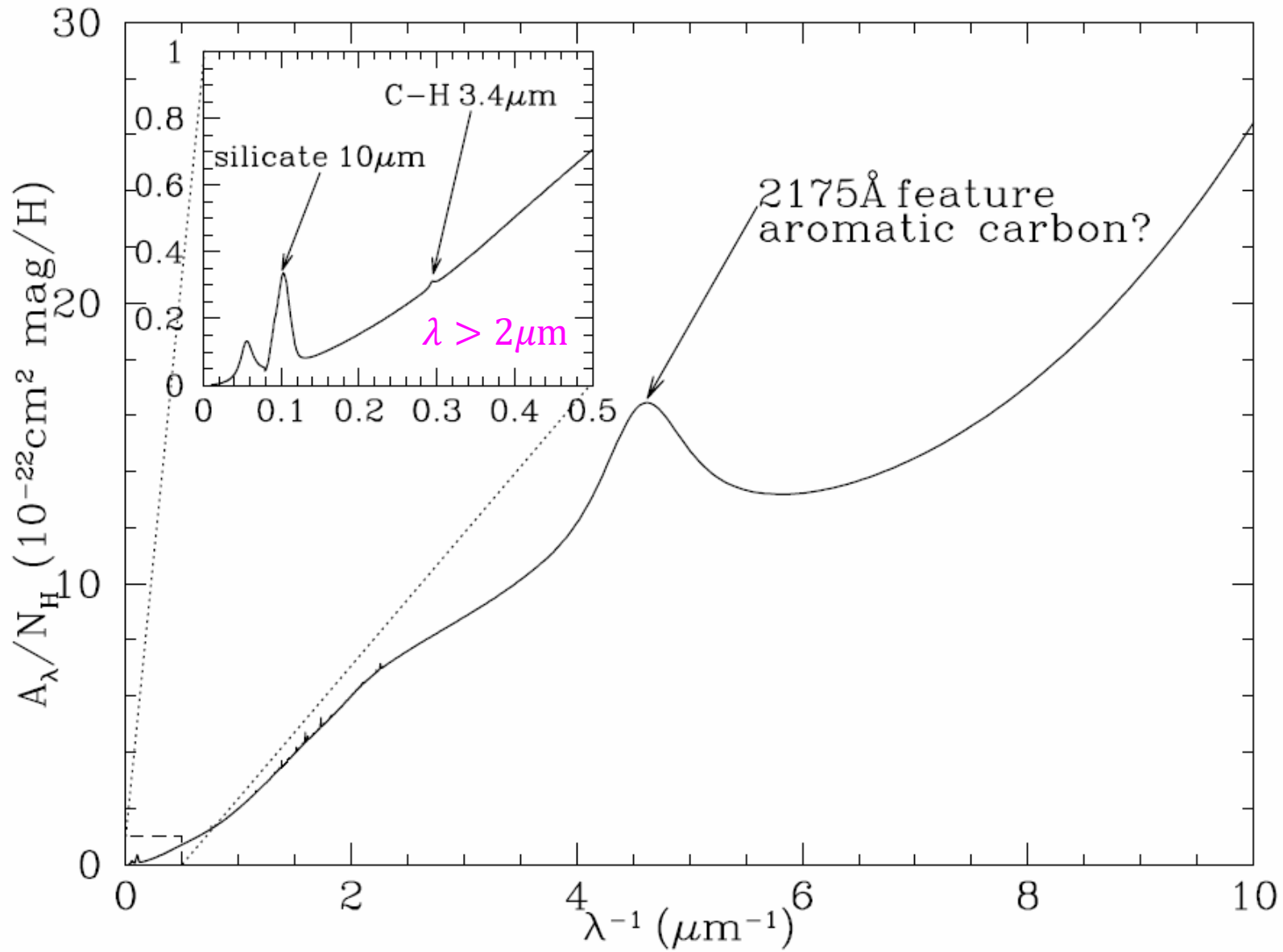
In the visible
 $F(\lambda) \sim 1/\lambda$

$$F(V) = 0$$

$$F(B) = +1$$

Find

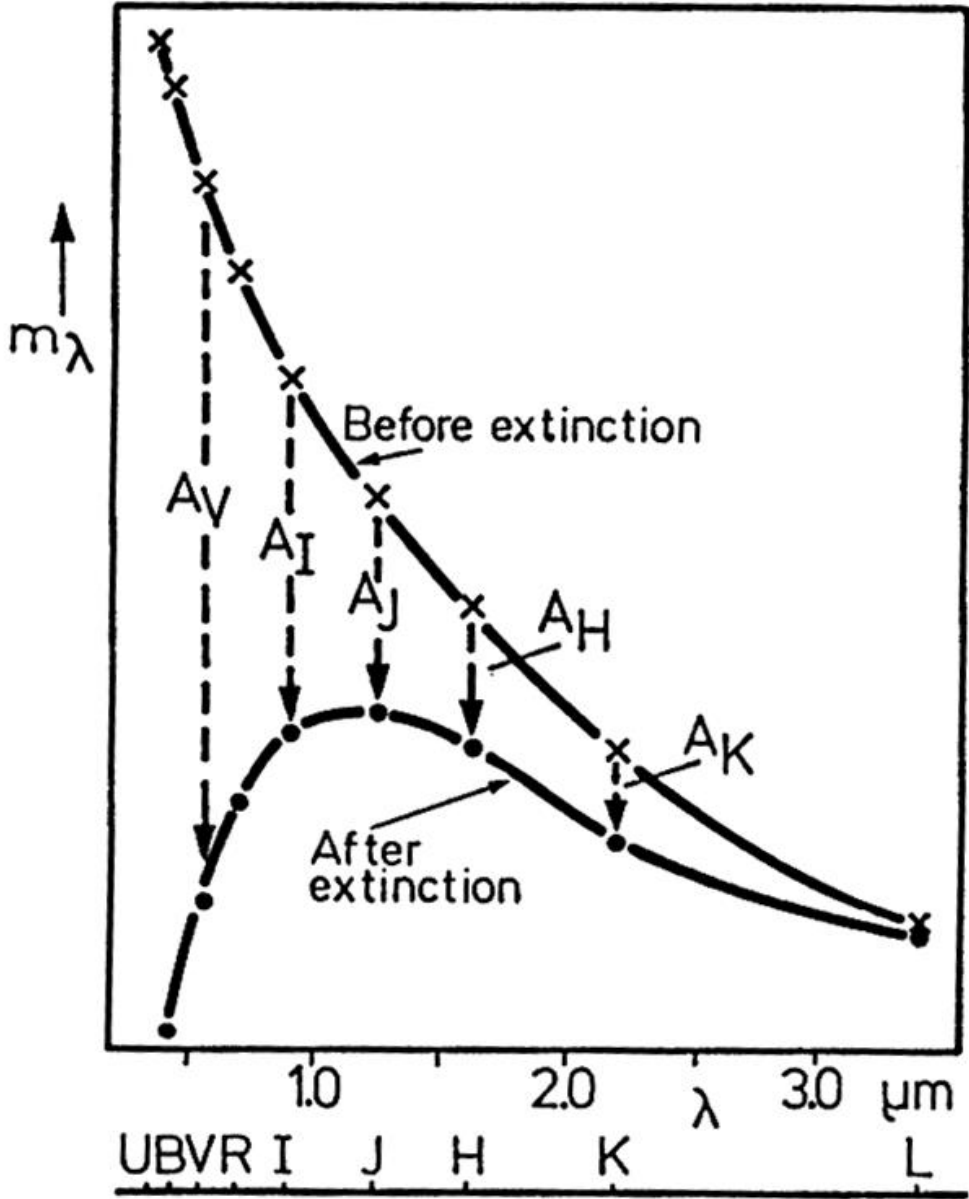
$$A_B/A_V = ?$$



Extinction 'law'

Table 21.1 Extinction for Standard Photometric Bands for $R_V = 3.1$

Band	$\lambda(\mu\text{m})$	A_λ/A_{I_C}	Band	$\lambda(\mu\text{m})$	A_λ/A_{I_C}
<i>M</i>	4.75	0.0573	<i>i</i>	0.7480	1.125
<i>L'</i>	3.80	0.0842	<i>R_C</i>	0.6492	1.419
<i>L</i>	3.45	0.101	<i>R_J</i>	0.6415	1.442
<i>K</i>	2.19	0.212	<i>r</i>	0.6165	1.531
<i>H</i>	1.65	0.315	<i>V</i>	0.5470	1.805
<i>J</i>	1.22	0.489	<i>g</i>	0.4685	2.238
<i>z</i>	0.893	0.830	<i>B</i>	0.4405	2.396
<i>I_J</i>	0.8655	0.879	<i>U</i>	0.3635	2.813
<i>I_C</i>	0.8020	1.000	<i>u</i>	0.3550	2.867



Draine

Rieke & Lebofsky (1985)

Table 1 Interstellar extinction and $A(\lambda)/A(J)$, where $J \approx 1.25 \mu\text{m}^a$

λ (μm)	$A(\lambda)/A(J)$	λ (μm)	$A(\lambda)/A(J)$		λ (μm)	$A(\lambda)/A(J)$	
			$R_V = 3.1$	$R_V = 5.0$		$R_V = 3.1$	$R_V = 5.0$
250 ^b	0.0015	5	0.095	0.095	0.24	9.03	5.13
100	0.0041	3.4 L	0.182	0.182	0.218	11.29	6.03
60	0.0071	2.2 K	0.382	0.382	0.20	10.08	5.32
35	0.013	1.65 H	0.624	0.624	0.18	8.93	4.66
25	0.048	1.25 J	1.00	1.00	0.15	9.44	4.57
20	0.075	0.9 I	1.70	1.70	0.13	11.09	4.89
18	0.083	0.7 R	2.66	2.43	0.12	12.71	5.32
15	0.053	0.55 V	3.55	3.06	0.091 ^c	17.2	—
12	0.098	0.44 B	4.70	3.67	0.073	19.1	—
10	0.192	0.365 U	5.53	4.07	0.041	9.15	—
9.7	0.208	0.33	5.87	4.12	0.023	7.31	—
9.0	0.157	0.28	6.90	4.34	0.004	3.39	—
7	0.070	0.26	7.63	4.59	0.002	1.35	—

^a $A(\lambda)/A(J)$ is the same for $\lambda > 0.9 \mu\text{m}$ for all lines of sight, to within present errors. To estimate $A(\lambda)/N(\text{H})$, multiply tabulated entry for $R_V = 3.1$ by $1.51 \times 10^{-22} \text{ cm}^2 (\text{H atom})^{-1}$. Except as noted below, entries are calculated from CCM89. Other values of R_V can be determined from that paper.

^b For $\lambda > 250 \mu\text{m}$, multiply entry for $250 \mu\text{m}$ by $(250 \mu\text{m}/\lambda)^2$.

^c For $\lambda < 0.1 \mu\text{m}$, entries are from (107), increased by 1.15 for continuity with the CCM89 extinction value at $0.12 \mu\text{m}$.

Total Extinction ... quantified by A_V (at 5550 Å)

Ratio of **total-to-selective extinction**, $R_V \equiv A_V / E_{B-V}$

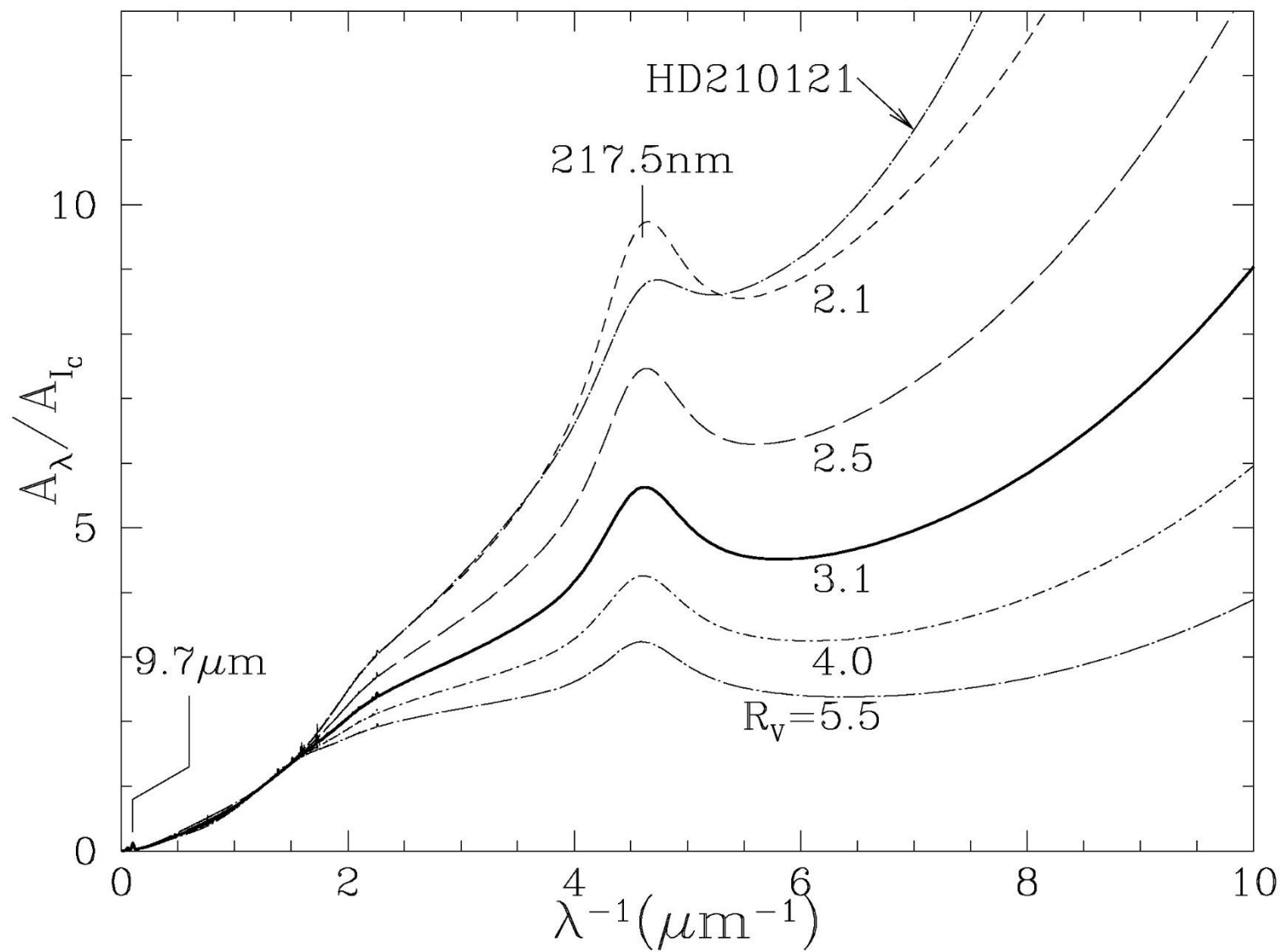
$A_V \leftrightarrow$ total number of grains and grain properties

Generally accepted $\langle R_V \rangle \approx 3.1 \pm 0.1$, i.e., $A_V = 3.1 E_{B-V}$

$N_H / E(B - V) = 5.8 \times 10^{21}$ [H atoms cm^{-2} mag $^{-1}$]

$E(B - V) / N_H$, the **dust-to-gas ratio**, is almost constant along MW lines of sight.

In the solar neighborhood $n_H \approx 1 \text{ cm}^{-3}$,
so $A_V \approx 1.6 [d/\text{kpc}]$ (Binney & Merrifield)



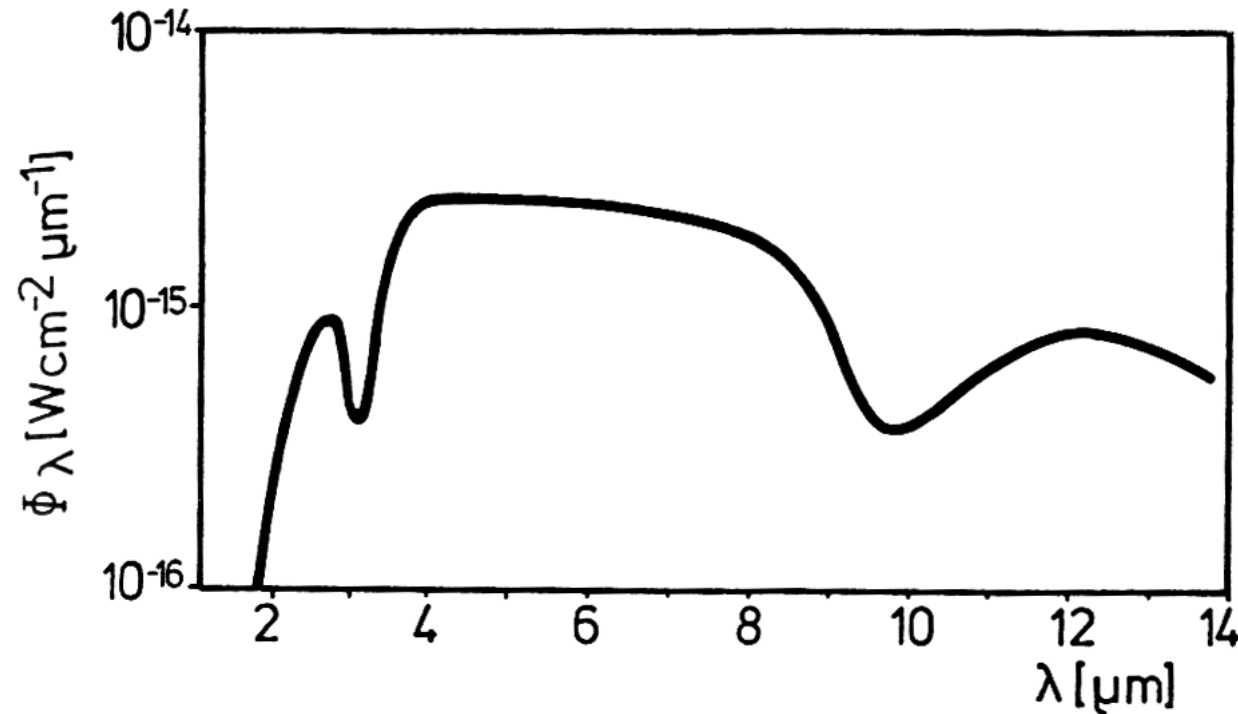
- ◆ A_V can be estimated by observing stars.
- ◆ The estimate is not reliable toward any particular direction or object, because clouds are patchy.
- ◆ In dark molecular clouds, R_V can be large $\sim 5 - 7$, implying large average sizes of dust grains,

$$a \nearrow \Rightarrow R_V \nearrow$$

- ◆ Grain properties: shape, size, composition, structure (core, mantle) \leftrightarrow optical properties

Stellar atmosphere (gas) → absorption lines

ISM dust (solid) → extinction profile with no strongly marked lines or bands, except a few weak bands at 3.1 μm (H_2O ice) and 9.7 μm (silicates)



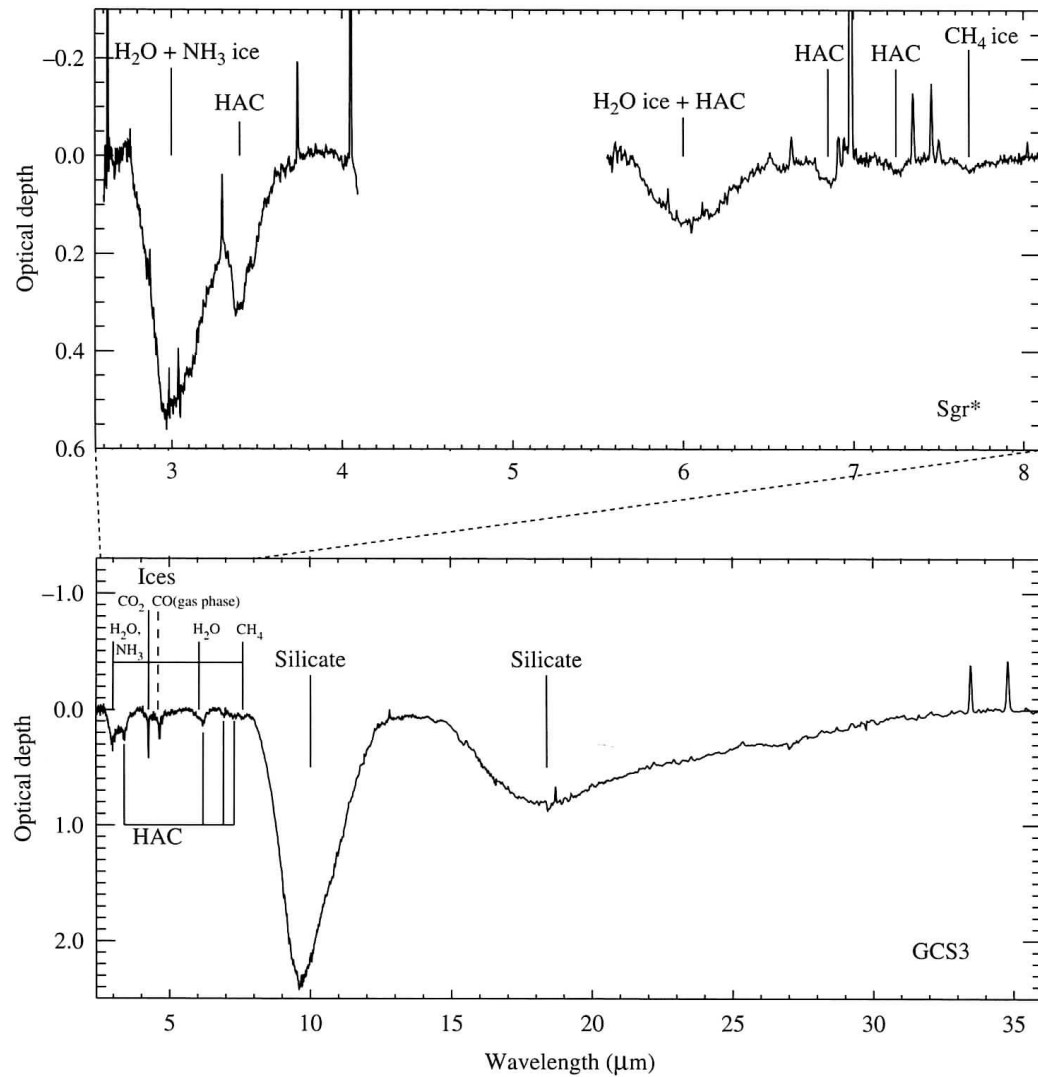
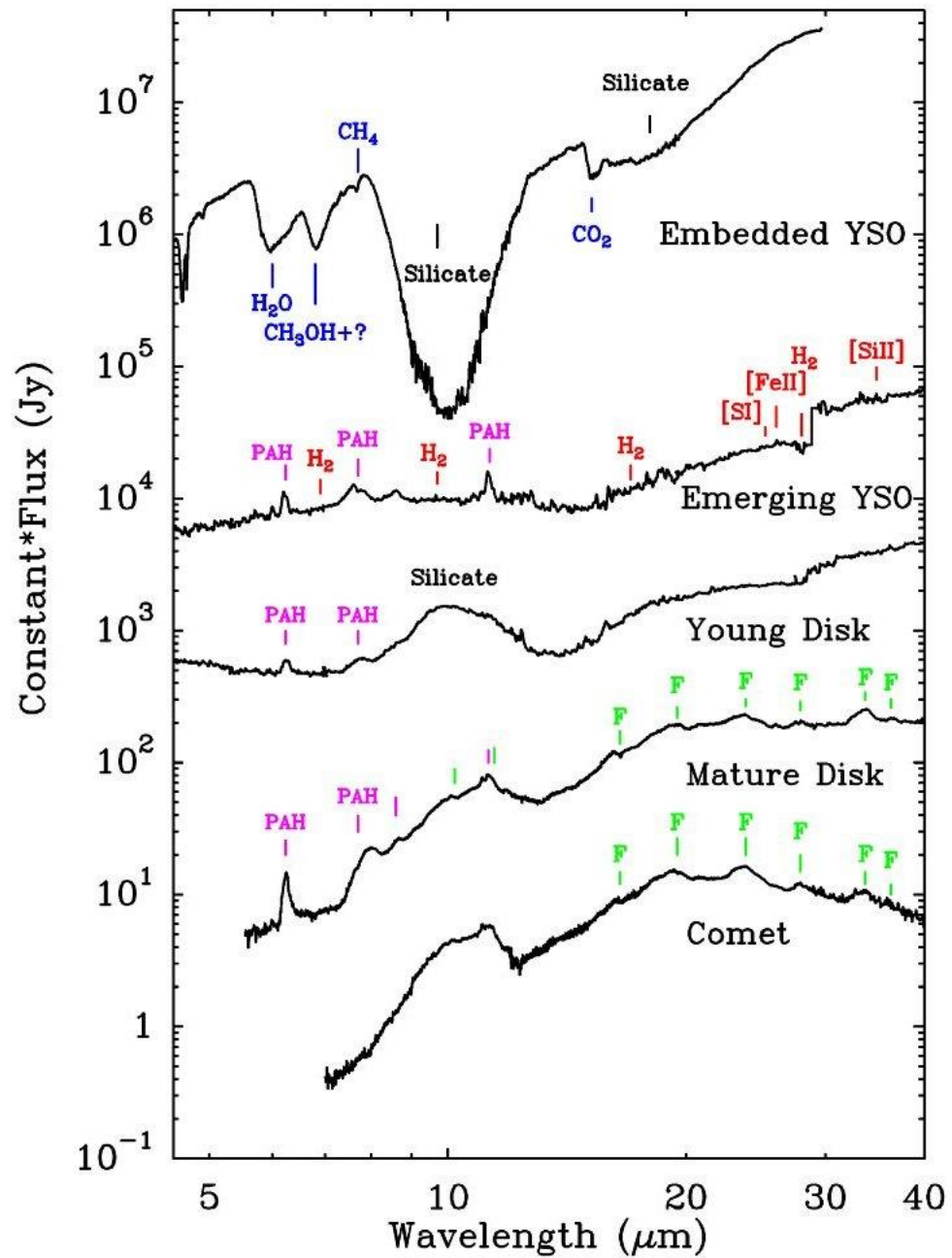


Figure 5.8 The spectrum of sources in the galactic center show strong absorption features due to dust grains along the line of sight. These are shown here on an optical depth scale. Identifications are indicated on top. Some of these features originate in the diffuse interstellar medium (e.g., the hydrocarbon [HAC] bands), while others are due to material in molecular clouds (e.g., H₂O, NH₃, and CH₄ ice). Some bands have probable contributions from both media. Figure courtesy of J. E. Chiar. Data from J. E. Chiar, *et al.*, 2000, *Ap. J.*, **537**, p. 749.



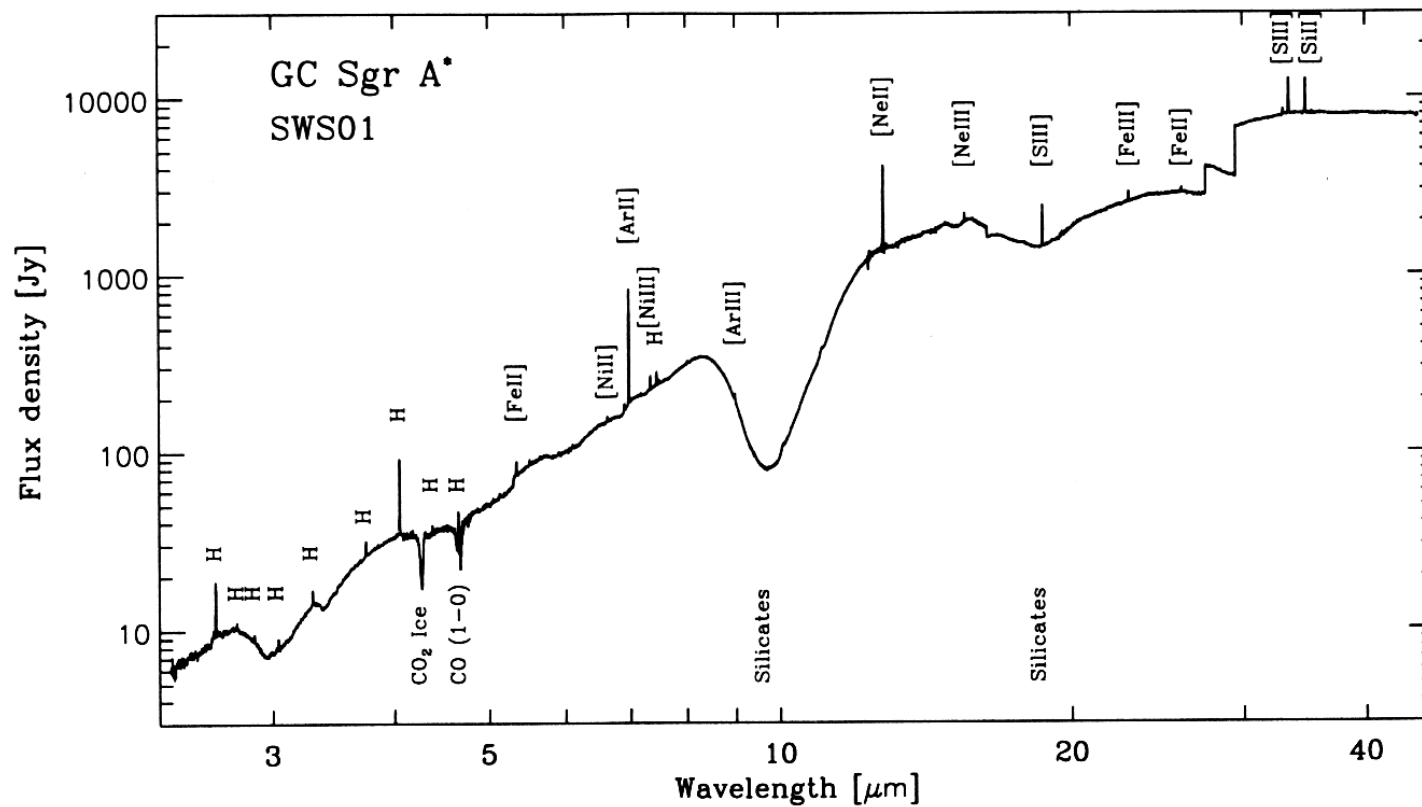


Figure 4.3. The infrared spectrum of the Galactic centre, taken over a wavelength range 2.4–45 μm by the Short Wavelength Spectrometer on the Infrared Space Observatory (ISO). In addition to various emission lines from the hotter regions along this line of sight, there are strong absorptions due to material in the dust grains near 3 μm (H₂O ice), 9.7 μm and 18 μm (silicates). Some weaker features are formed, including those at 3.4 μm (hydrocarbons) and 4.3 μm (solid carbon dioxide). (Courtesy D Lutz *et al* 1996.)

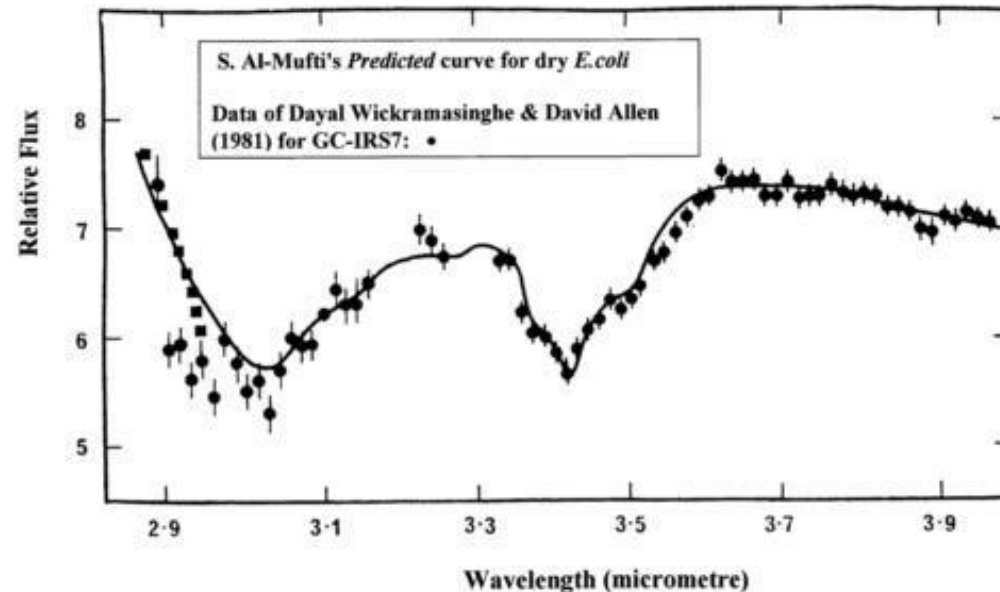
Cross-Linked Hetero Aromatic Polymers in Interstellar Dust

N.C. Wickramasinghe^a, D.T. Wickramasinghe^b and F. Hoyle^a

^a School of Mathematics, Cardiff University, PO Box 926, Senghennydd Road
Cardiff CF2 4YH, UK

^b Department of Mathematics, Australian National University
Canberra, ACT2600, Australia

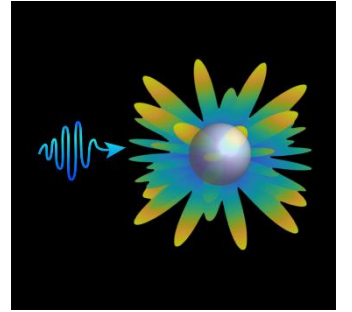
Abstract: *The discovery of cross-linked hetero-aromatic polymers in interstellar dust by instruments aboard the Stardust spacecraft would confirm the validity of the biological grain model that was suggested from spectroscopic studies over 20 years ago. Such structures could represent fragments of cell walls that survive 30km/s impacts onto detector surfaces.* **Astrophysics and Space Science, 2000**



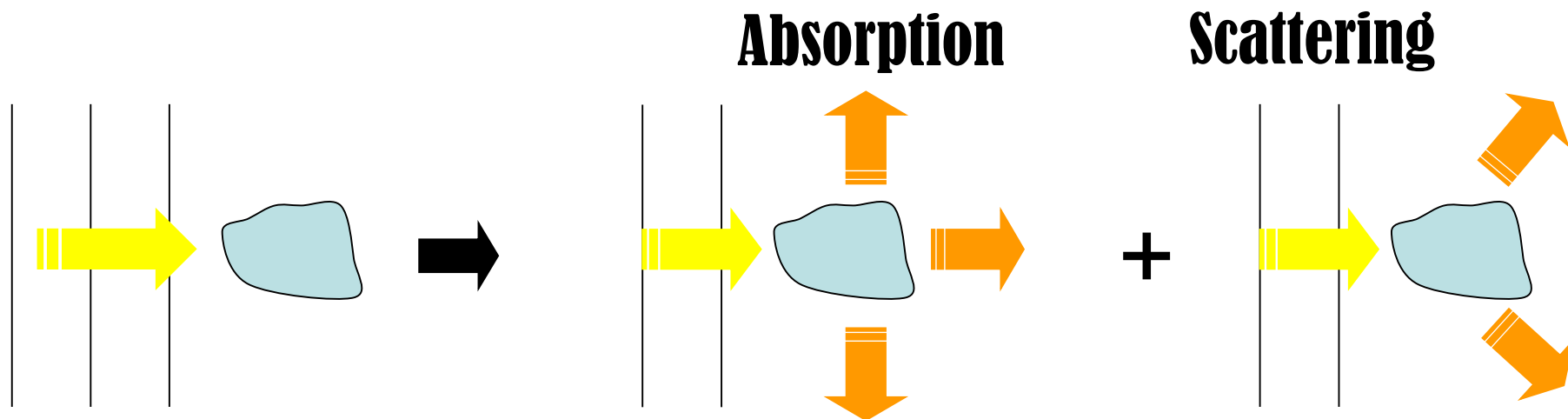
Escherichia coli
大腸桿菌

So it all amounts to the efficiency the factors Q 's

$$Q_{\text{extinction}} = Q_{\text{scattering}} + Q_{\text{absorption}}$$



Scattering of EM waves by spherical particles (the simplest case)
→ Mie scattering (Lorenz-Mie solution to the Maxwell's eqs),
when size of scattering particles \approx wavelength
(aerosol, pollen, water droplets)



Albedo (“whiteness”): how much light is reflected without being absorbed. $A = Q_{\text{sca}}/Q_{\text{ext}}$

In astronomy, **geometric albedo** A_G (measured brightness when illumination comes from directly behind the observer), **Bond albedo** A_B (total energy reflected).

For solar-system planets,

Earth: $A_G = 0.43$, $A_B = 0.31$,

Venus: $A_G = 0.69$, $A_B = 0.76$,

Scattering

Size of particles a

□ $2\pi a \ll \lambda \implies \text{scattering} \leftrightarrow \lambda$

$I_{\text{scattering}} \propto \lambda^{-4}$ (Rayleigh scattering)

This is why a clear sky is blue.

□ $2\pi a \gg \lambda \implies \text{scattering} \leftrightarrow \lambda$ (cross section \sim geometric)

$I_{\text{scattering}} \propto \lambda^0$

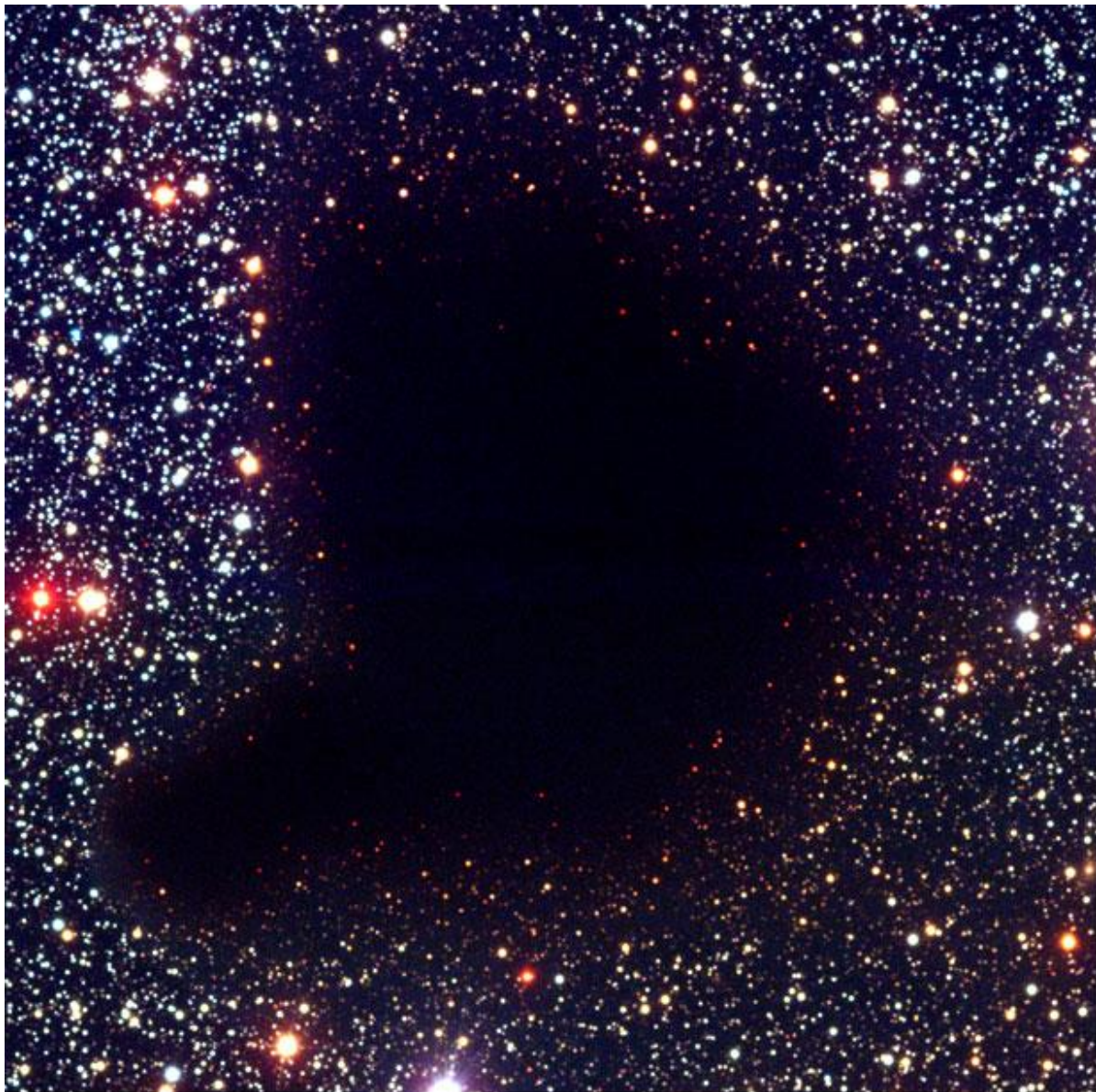
This is why a cloudy sky is gray.

□ $2\pi a \approx \lambda$ (dust $\bar{a} = 0.3 \mu\text{m}$; λ in UV/visible)

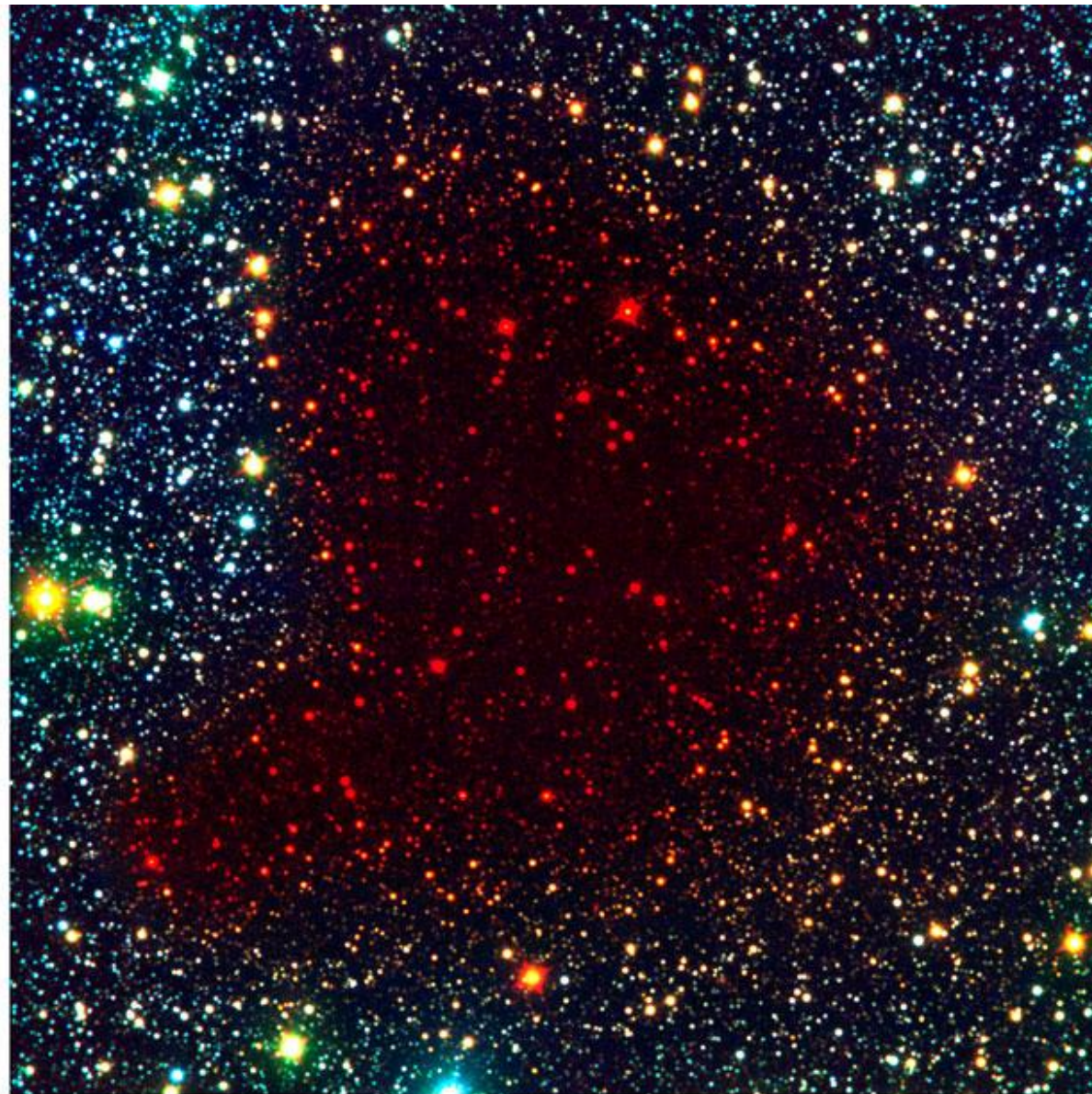
$I_{\text{scattering}} \propto \lambda^{-1}$

This is interstellar reddening --- why distant/embedded stars are reddened.

Usually one assumes a size distribution, e.g., a power law, $n(a) \propto a^{-\beta}$ 32



B, V, I



B, I, K

Barnard 68 (ESO)

Rayleigh Scattering

--- elastic scattering of light by spherical particles much smaller than the wavelength; approximately

$$I = I_0 \left(\frac{1 + \cos^2 \theta}{2d^2} \right) \left(\frac{2\pi}{\lambda} \right)^4 \left(\frac{n^2 - 1}{n^2 + 2} \right)^2 \left(\frac{a}{2} \right)^6$$

I_0 : incident intensity

d : distance between particle and observer

θ : scattering angle

λ : wavelength

n : index of refraction

a : diameter of the particle

⇔ strongly on size of the particles and on wavelength

Small particles

Large

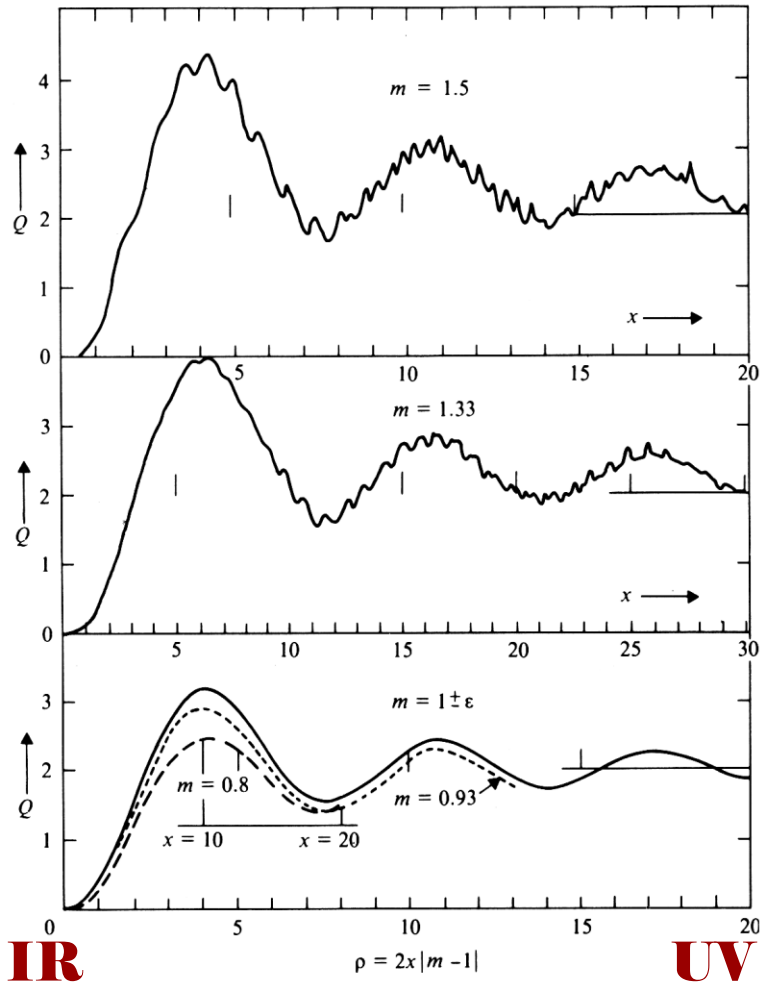


Figure 4.5. Extinction curves for spheres computed from Mie's formula for $m = 1.5$, 1.33 , 0.93 and 0.8 . The scales of x have been chosen in such a manner that the scale of $\rho = 2x|m - 1|$ is common to these four curves and to the extinction curve for $m = 1 + \epsilon$. (From van de Hulst 1957.)

Index of refraction

$$m = n + i k$$

$$m = \infty$$

Dielectric

$$m = 1.33$$

Ice

$$m = 1.33 - 0.09 i$$

Dirty ice

$$m = 1.27 - 1.37 i$$

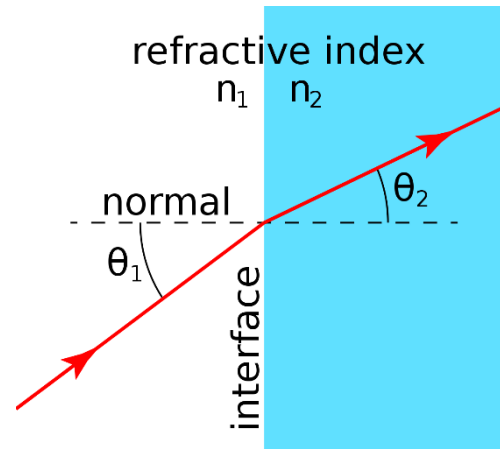
Iron

Real part: ratio of vacuum speed of light to the phase speed in the medium

Imaginary part: absorption

$$x = 2\pi a / \lambda \approx \text{dust size/wavelength}$$

Refractive index



Snell's law

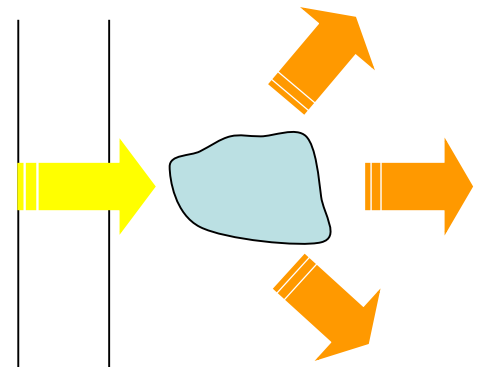
$$n_1 \sin \theta_1 = n_2 \sin \theta_2$$

$n_r = c/v$ (speed of light in vacuum)/(phase velocity in medium)

e.g., 1 (vacuum), 1.000 (air), 1.333 (water), 1.31 (ice),
1.52 (window glass), 2.42 (diamond)

If attenuation is taken into account \rightarrow complex refractive index,
 $m = n + i k$, where k is the extinction coefficient

- In Earth's atmosphere, scattering
 $\sim \lambda^{-4}$ for small particles
 $\sim \lambda^0$ for large particles
- In ISM at visible wavelength, scattering
 $\sim \lambda^{-1}$ for particle size \approx wavelength $\sim 0.5 \mu\text{m}$
- For large particles, $Q \sim 2$,
i.e., $\sigma \approx 2$ times the geometric cross section,
because light diverges over larger extent



EXTINCTION IN THE DIFFUSE INTERSTELLAR MEDIUM

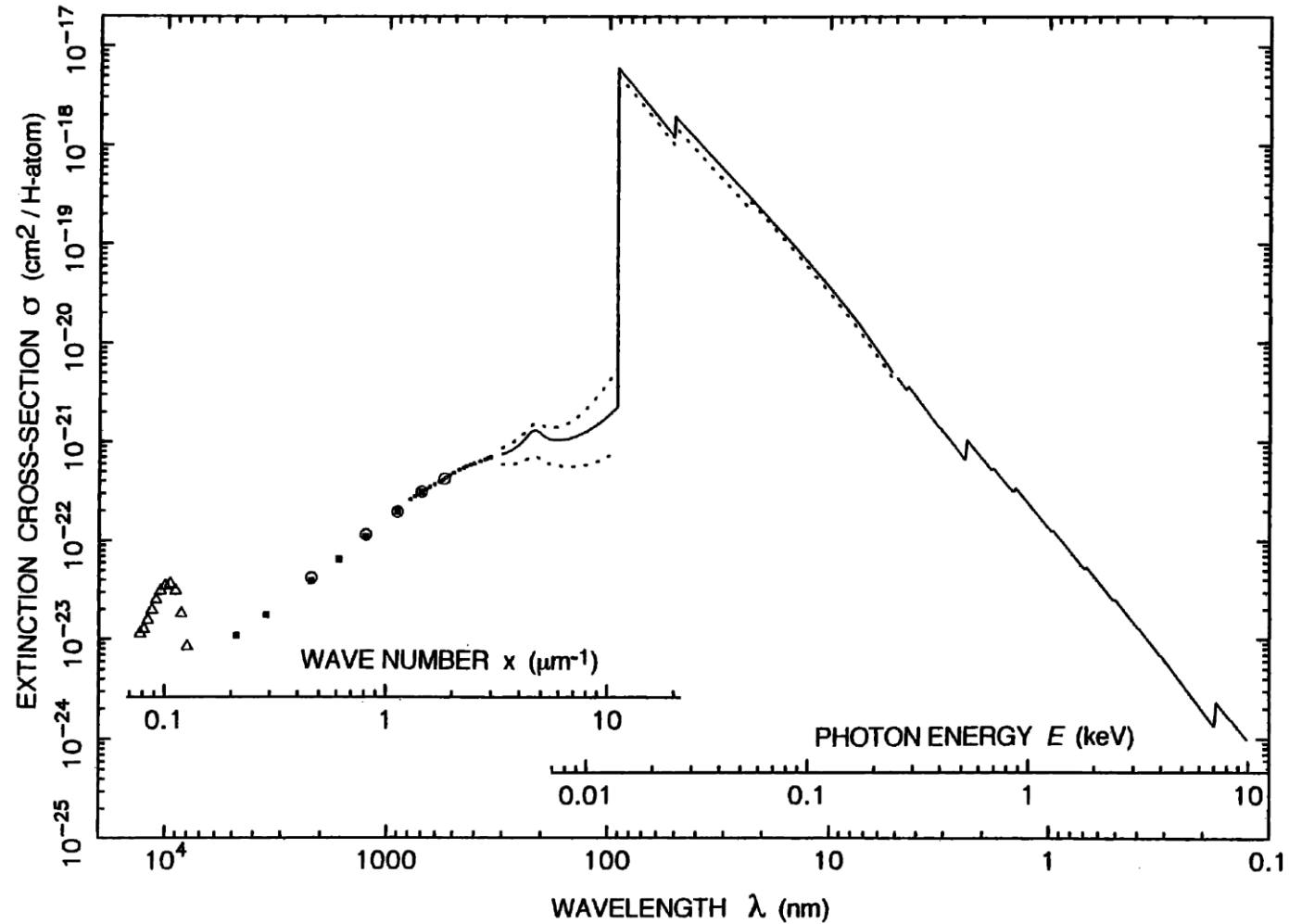


Figure 1. Solid line: The extinction cross-section normalized per H-atom of the diffuse neutral (95% HI, 5% HII, 10% HeI) interstellar medium from the far-infrared to the X-rays. Dotted lines: The UV extinction on the lines of sight in two extreme cases, HD 204827 (upper curve) and HD 37023 (θ_1 -Orionis D, lower curve). Shortward of the Lyman limit, the dotted line corresponds to the ionization state of the solar neighbourhood (80% HI, 20% HII, 5% HeI, 5% HeII). The sources of the data are given in the text.

Ryter (1996)

Rayleigh Scattering by Small Particles



Polarization of
plane wave, λ

Sphere oscillates with the \mathbf{E} field,
and radiates like an electric dipole.

Power radiated in all directions

$$P = \frac{2}{3} \frac{e^2}{c^3} \ddot{x}^2 \quad \text{where } \ddot{x} \text{ is acceleration.}$$

$$x = x_0 e^{-j\omega t}$$

$$\ddot{x} = -x_0 \omega^2 e^{-j\omega t}$$

$$P = \begin{cases} \frac{2}{3} \frac{e^2}{c^3} |x_0 \omega^2|^2 \leftrightarrow \lambda^{-4} \\ \sigma S \end{cases}$$

Poynting vector $S = \frac{c}{8\pi} \mathbf{E} \mathbf{B}^* = \frac{c}{4\pi} \mathbf{E}^2$

$$Q_{sca} = \sigma / \pi a^2$$

One can show ...

$$Q_{sca} = \frac{8}{3} x^4 \left| \frac{m^2 - 1}{m^2 + 2} \right|^2$$

$$\propto \lambda^{-4}$$

$$\checkmark x = 2\pi a / \lambda$$

$$\checkmark m = n + i k$$

$$\checkmark Q_{ext} = Q_{sca} + Q_{abs}$$

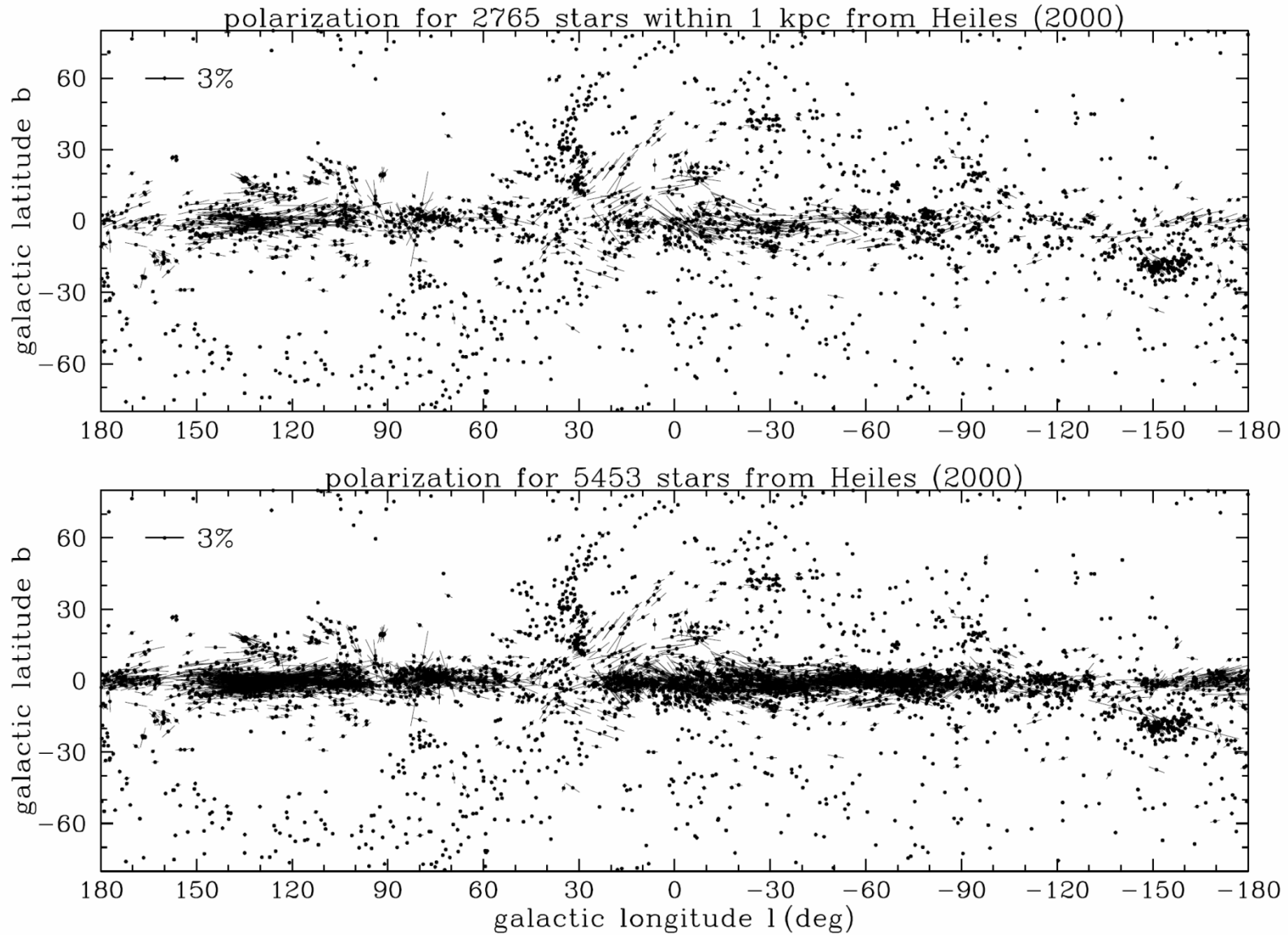
$$Q_{abs} = -4 x \operatorname{Im} \left(\frac{m^2 - 1}{m^2 + 2} \right)$$

$$\propto \lambda^{-1}$$

Note:

- When m is real, i.e., no imaginary part
→ no absorption
- With the imaginary part, most extinction at small x comes from absorption → Q_{ext} increases
- For pure ice, transmitted and refracted signals interfere → large scale oscillation
- If there is impurity (internal absorption)
→ oscillation is reduced

Polarization



Heiles (2000)
Draine Fig 21.3

Empirically, polarization peaks around V band (the “Serkowski law” (1973))

$$p(\lambda) \approx p_{\max} \exp[-K \ln^2(\lambda/\lambda_{\max})],$$

where $\lambda_{\max} \approx 5500 \text{ \AA}$, and $K \approx 1.15$.

Polarization is caused by dust grains partially aligned by IS B field, with the shortest axis parallel to the field direction.

References

- (1968) van de Hurst in “*Nebulae and Interstellar Matter*” ed. Middlehurst & Aller; No. 15 “law” was extensively used.
- (1978) Eric Becklin, *ApJ*, 220, 831 Galactic center study
- (1979) Savage & Mathis, *ARAA*, 17, 73
- (1984) Natta & Panagie, *ApJ*, 287, 228
- (1990) Mathis, *ARAA*, 28, 37